



# Raincrop

**EN** User Manual

## Summary

EN

List of parts .....	p.4
Technical description .....	p.5
Safety information .....	p.6
Access the application .....	p.7
Activate you Sencrop .....	p.7
Choose your location .....	p.8
Set up Tripod .....	p.9
Set up the mast .....	p.10
Final assembly.....	p.11
Use and maintenance precautions .....	p.12
Battery replacement .....	p.14
Warranty .....	p.16
Technical data .....	p.18
Online support team .....	p.19

## List of parts

EN



1 Raincrop



2 Bird spikes



### Post (three segments)



3 Upper segment with screw

4 Lower segment with auger

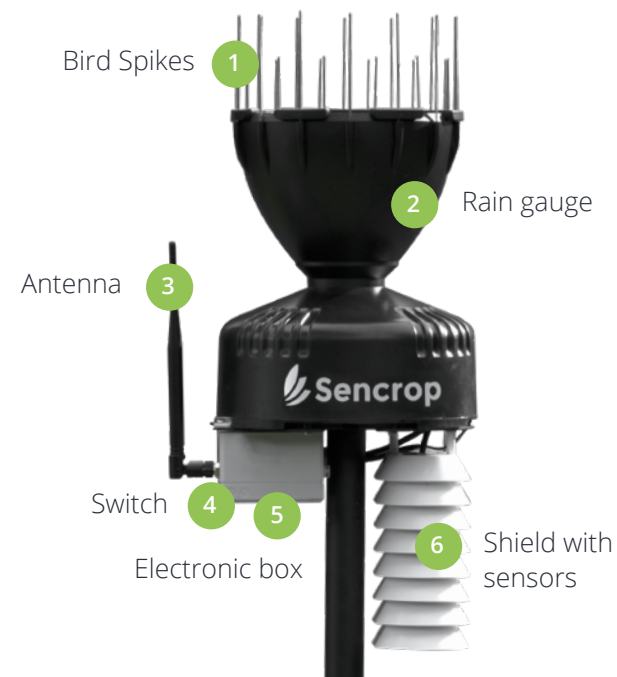
5 Middle segment

6 30 cm steel shaft

7 Tripod elements

## Technical description

EN



Bird Spikes

1

Rain gauge

2

Antenna

3

Switch

4

Electronic box

5

Shield with sensors

6



## Safety information

EN

### ⚠ Warning :

- Please do not use the product when the temperature is higher than 60°C or lower than -20°C.
- Do not place any object or fluids or anything else than water in the collector.
- Do not use the radiation shield as a lever to open the collector
- Please use the product according to the manual.  
Any loss or damage caused from improper use will be borne by the user.
- If left unused for a long period, switch off the station and store the station in a cool and dry place.
- Do not arbitrarily dismantle, repair or modify the battery.
- The battery must be removed from the appliance before it is scrapped.
- The battery is to be disposed of safely.
- Please do not discard waste batteries.  
Leave them to a professional recycling organization.
- The appliance must be switched off when removing.

### Basic parameters :

Frequency range : 868 MHz ISM band

Max ERP : ≤ 14dBm

Only use antenna provided by Sencrop.

## Access the app

EN

### On your smartphone :

Search for «**Sencrop**» in the **App Store** or **Google Play** to download and install the app.

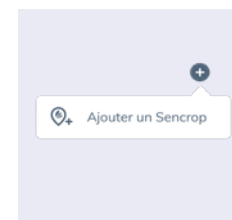
### On your web browser :

- Click on the link that you received in your order confirmation mail
- Access the app by opening **Google Chrome**, **Mozilla Firefox** or **Safari** :  
[app.sencrop.com](http://app.sencrop.com)

⚠ Warning : Other web browser are not officially supported

### To Add your station to your account :

Scan the **QR code**. Find the Serial Number «**SN**» and the Activation Code «**AC**» on your device or on the package or scan the **QR code**.



## Choose your location

EN

▶ You can also check the video "How to install your station" on our FAQ



To ensure reliable data with your device, you must follow some installation rules :

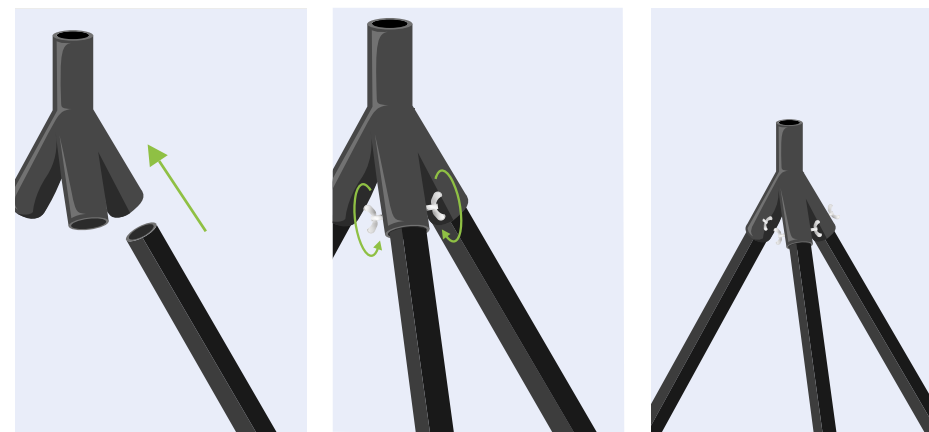
- Put your station **in the field** in the crop you want to monitor.
- The place must be a **leveled** and **open area** without obstacles.
- The device must be at least **two times away** the height of the nearest obstacle.
- The Rain collector should be set at a height **around 1m50**. ↑

✓ **Do** : Place in your field in open area.

✗ **Don't** : - Close to trees, hedges  
- Close to a building  
- height < 1 m  
- On the roof of a building  
- Close to electric pylon  
- Indoor (except Greenhouse)

## Set up Tripod

EN

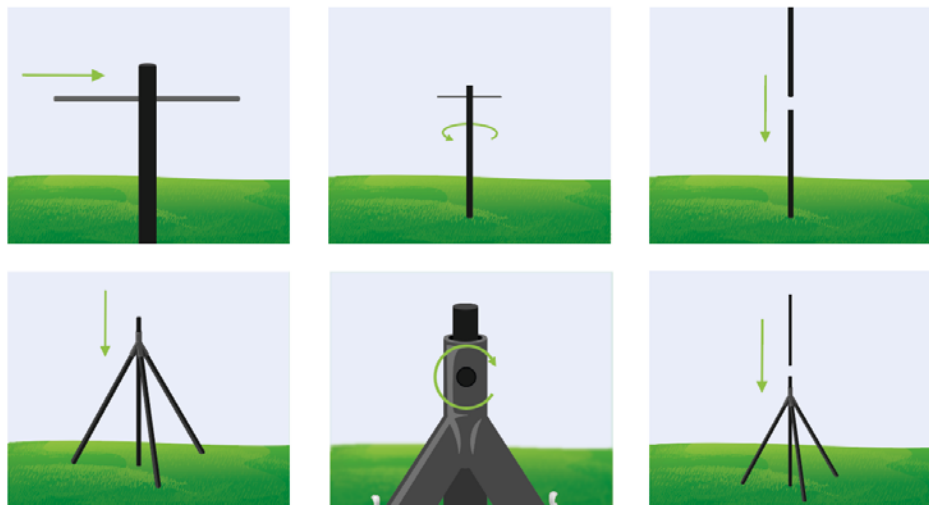


- Insert **tripod leg** in the **tripod head**.
- Insert a **butterfly screw** in the hole through the **tripod leg** and **tripod head**.
- Use the **butterfly nut** to lock the 2 parts.
- Repeat for the 2 other legs.

⚠ **Warning** : Take precautions when handling the metal tubes.

## Set up the mast

EN



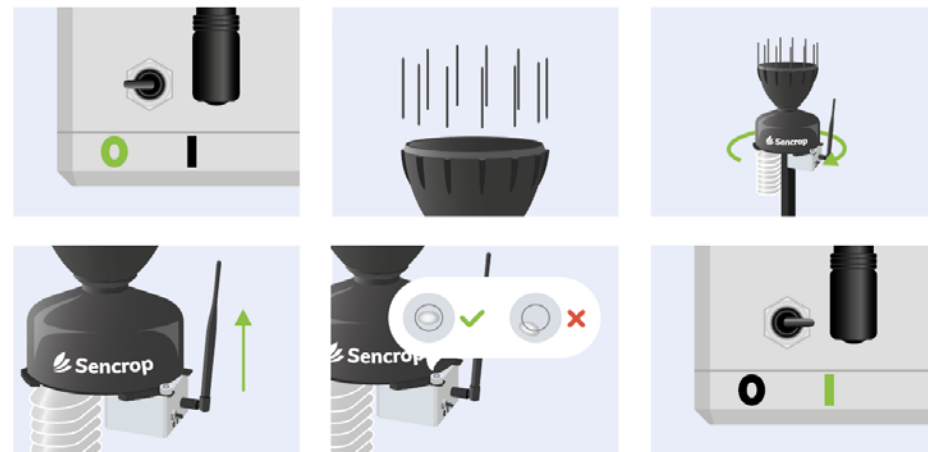
- Put the **metal rod** in the mast.
- Insert the auger about **40cm** in the ground.
- Snap the **middle segment** of the mast.
- **Slide the tripod** previously prepared from the top of the mast.
- Push the tripod in the **ground** and ensure the **mast is vertical**.
- Snap the **last segment** of the mast.

- ✓ **Do :** Use the metal rod as lever arm.
- ✗ **Don't :** Use a hammer to push in the ground

⚠ **Warning :**  
Be careful, the auger can cause injury when manipulated.  
Take precautions when handling the metal tubes.

## Final assembly

EN



- Verified that the station is turned off.
- Put the **bird spikes** on your Raincrop.
- Put the Raincrop on **top of the mast**.
- Check that the **antenna** is oriented toward the sky.
- Check with the **external level bubble** that the Raincrop is leveled.
- **Switch on** the Raincrop, you'll receive your first data **in 15 minutes** !

- ✓ **Do :** Your station is steady and looks robust when shook.
- ✗ **Don't :** Station not leveled.

⚠ **Warning :** 5° Tilt can cause an error of 2%

⚠ **Warning :**  
Bird spikes can prick.  
To prevent hurting yourself you can use a clamp  
to put the bird spikes in the station.  
Bird spikes contains little parts, keep them away from children.

# Use and maintenance precautions

EN

▶ For a more detailed presentation, consult our FAQ



- 1 **Switch off** the station.
- 2 Remove it from the mast.
- 3 Unlock the collector.
- 4 Clean the bucket.
- 5 Remove and clean the filter and under the filter of collector. 💧
- 6 Verify that water flows properly. 💧
- 7 Clean the white cup of the radiation shield with a barely wet cloth.
- 8 Put back the station on the mast.
- 9 Switch on the station.

## Frequency :

Every **2 months** or when **data seems to drift**.

- ✓ **Do :** Handwash with soap, water and a cloth.
- ✗ **Don't :**
  - high pressure cleaning / hazardous product.
  - Immerse totally or partially the station under water.
  - Use blow guns compressed air.

EN

# Battery replacement

EN

Expected battery life is **2-3 years**.

Battery provided is **not rechargeable** and need to be replaced.

A dead battery must be removed from the product.

When you are not using Raincrop over a prolonged period of time (>2 months), remove the battery from the product.

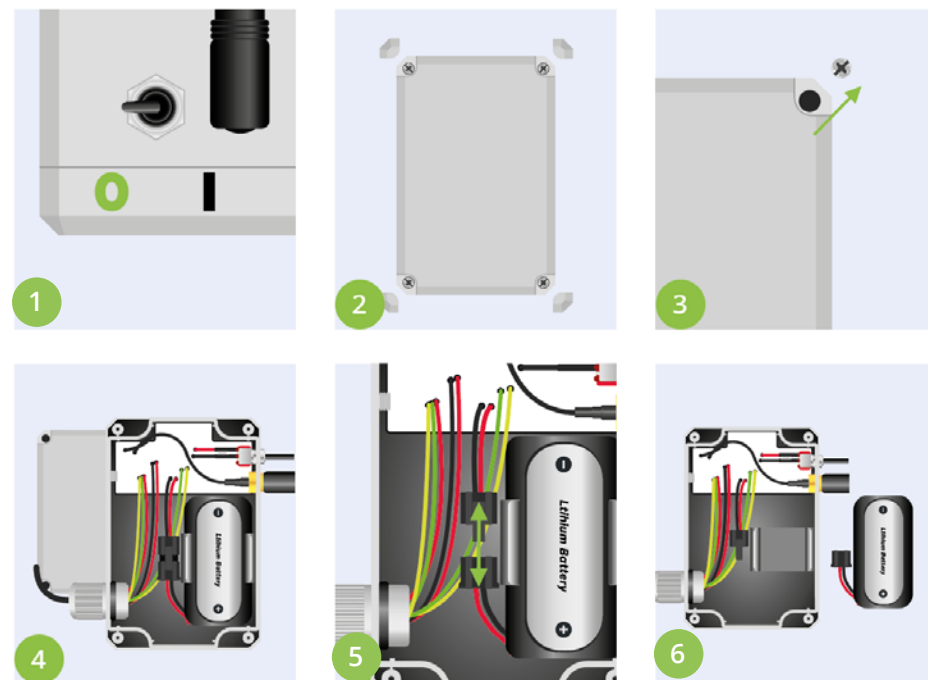
If you need to change the battery, contact the manufacturer.

The only battery suitable for this product is the one provided by the manufacturer.

If the battery has been damaged, contact the manufacturer.

**Use only the batteries provided by Sencrop.**

To order one contact the support team, use the **Help menu** of the application.



EN

## Remove battery procedure :

- 1 **Switch off** the station.
- 2 Remove the **corner caps** from the electronic box with a thin tool.
- 3 Remove the lid of the electronic box by removing the screw.

### ⚠ Warning :

Take precautions when handling your tool to remove the screw caps, the caps can come off abruptly.  
Keep them out of the reach of children.

- 4 Unplug the battery.
- 5 Plug the new one.



## Warranty <sup>(1/2)</sup>

EN

### Informations :

The seller provides warranty in accordance with the legislation of the customer's own country of residence, with a minimum of 2 years, starting from the date on which the appliance is sold to the end user.

The warranty only covers defects in material or workmanship.

The repairs under warranty may only be carried out by an authorized service centre.

When making a claim under the warranty, the original bill of purchase (with purchase date) must be submitted.

### The warranty will not apply in cases of :

- Normal wear and tear
- Incorrect use, e.g. use of non-approved accessories.
- Use of force, damage caused by external influences
- Damage caused by non-observance of the user manual, e.g.
- Use of incompatible batteries or non-compliance with the installation instructions.

## Warranty <sup>(2/2)</sup>

EN

### WEEE Information :



Correct Disposal of this product .

This marking indicates that this product should not be disposed with other household wastes throughout the EU.

To prevent possible harm to the environment or human health from uncontrolled waste disposal, recycle it responsibly to promote the sustainable reuse of material resources.

To return your used device, please use the return and collection systems or contact the retailer where the product was purchased.

They can take this product for environmental safe recycling.

## Technical data

EN

Measurements / Mesures		
Rain Gauge	Principle of operation	Double tipping buckets
	Operating temperature range	0 – +85 °C
	Measurement range	0 – 1039 mm/h
	Accuracy	± 4 % at 50 mm/h
	Resolution	0.254 mm
Temperature and humidity	Principle of operation	3 digital sensors
	Temperature range	-40 °C to / à +125 °C
	Humidity range	0 % to / à 100 %
	Temperature accuracy	± 0.2 °C typ. / ± 0.3 °C max. (-40 °C to +90 °C)
	Humidity accuracy	± 2 % typ. / ± 3 % max. from 0 °C to 80 °C (0 % HR to 100 % HR)
Mechanical characteristics / Caractéristiques mécaniques		
Post	Material	Steel with polyzinc treatment
	Dimensions	Length 210 cm Diameter 30 mm
	Weight	3 kg
Shield	Material	ASA
Rain gauge	Material	UV-stabilized ABS plastic
	Collection area	214 cm²
Support plate	Material	Stainless steel / Acier inoxydable
General / Général		
Battery	Battery	Lithium-Thionyl Chloride - capacity 19Ah - 3.6V
	Temperature range	-60°C to / à +85°C
Other sensors	Accelerometer	
	GPS	
Communication	Network	Sigfox (868 MHz)
	Data transmission period	Every 15 minutes

## Online support team

EN

### Need help ?

If you have any questions, you can contact our support team via the online support in the **Help menu** in your application by **clicking on your name**.



**Frequently Asked Questions**  
Open the FAQ



**By Chat**  
Open Chat



**By email at**  
support@sencrop.com

Our support teams are available on **working days** from **9 am to 6 pm**.



[www.sencrop.com](http://www.sencrop.com)

